

**STRIKE:**

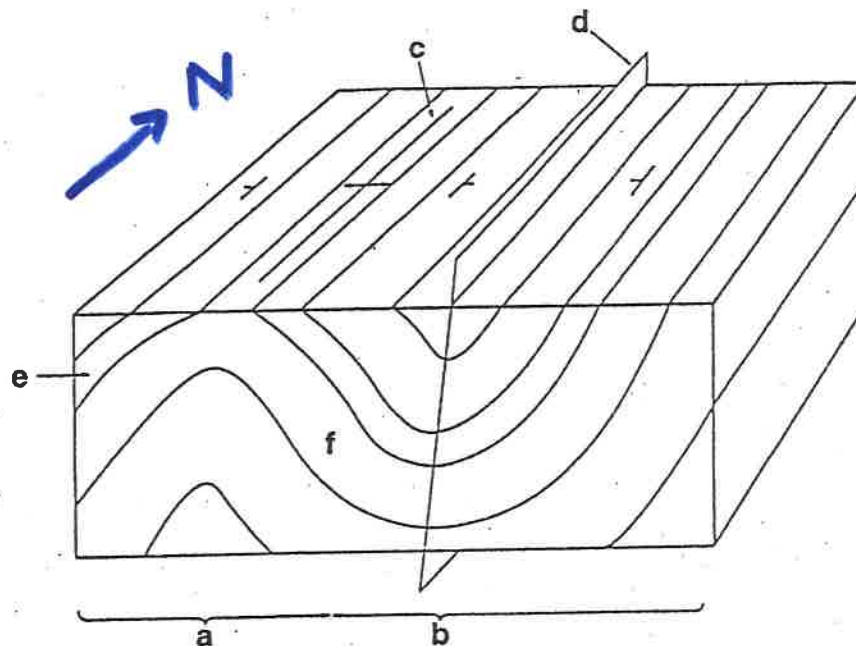
- 1. MAP DIRECTION**
- 2. OF LINE OF INTERSECTION**
- 3. BETWEEN AN INCLINED SURFACE(JOINT, FAULT, BED)**
- 4. AND A HYPOTHETICAL HORIZONTAL PLANE.**

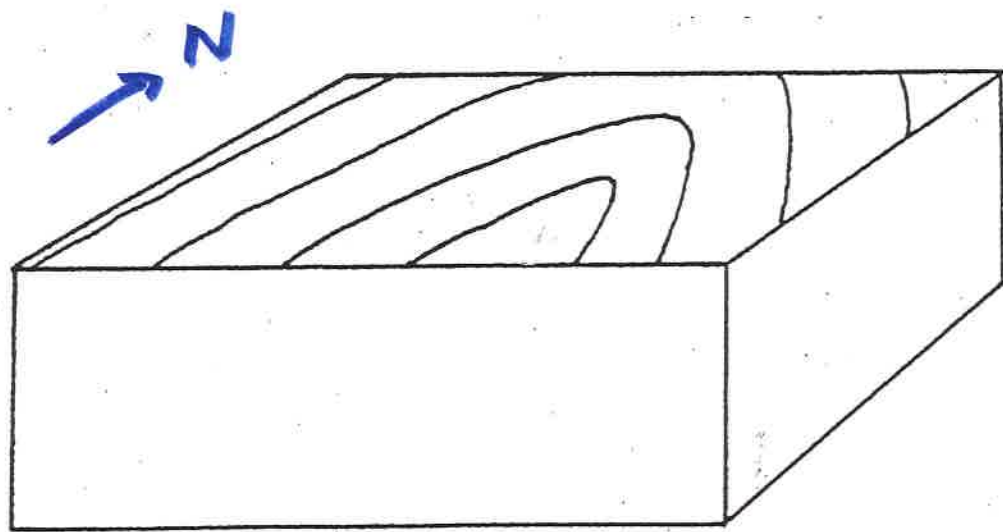
**DIP:**

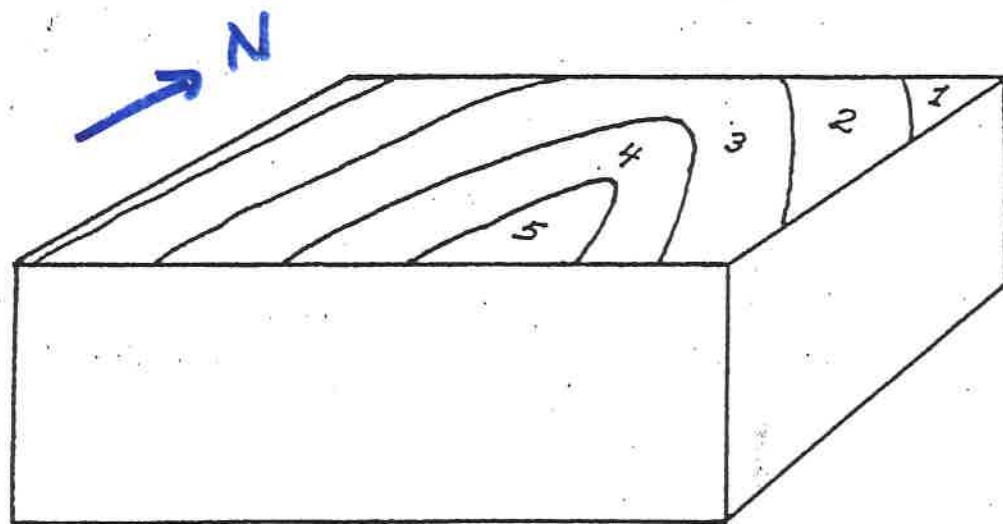
- 1. ANGLE BETWEEN HYPOTHETICAL HORIZONTAL PLANE AND INCLINED SURFACE(JOINT, FAULT, BED)**
- 2. MEASURED PERPENDICULAR TO STRIKE.**

Label the parts of the horizontal folds shown in the block diagram below, using the following terms: anticline, syncline, fold limb, common limb, fold hinge, hinge plane

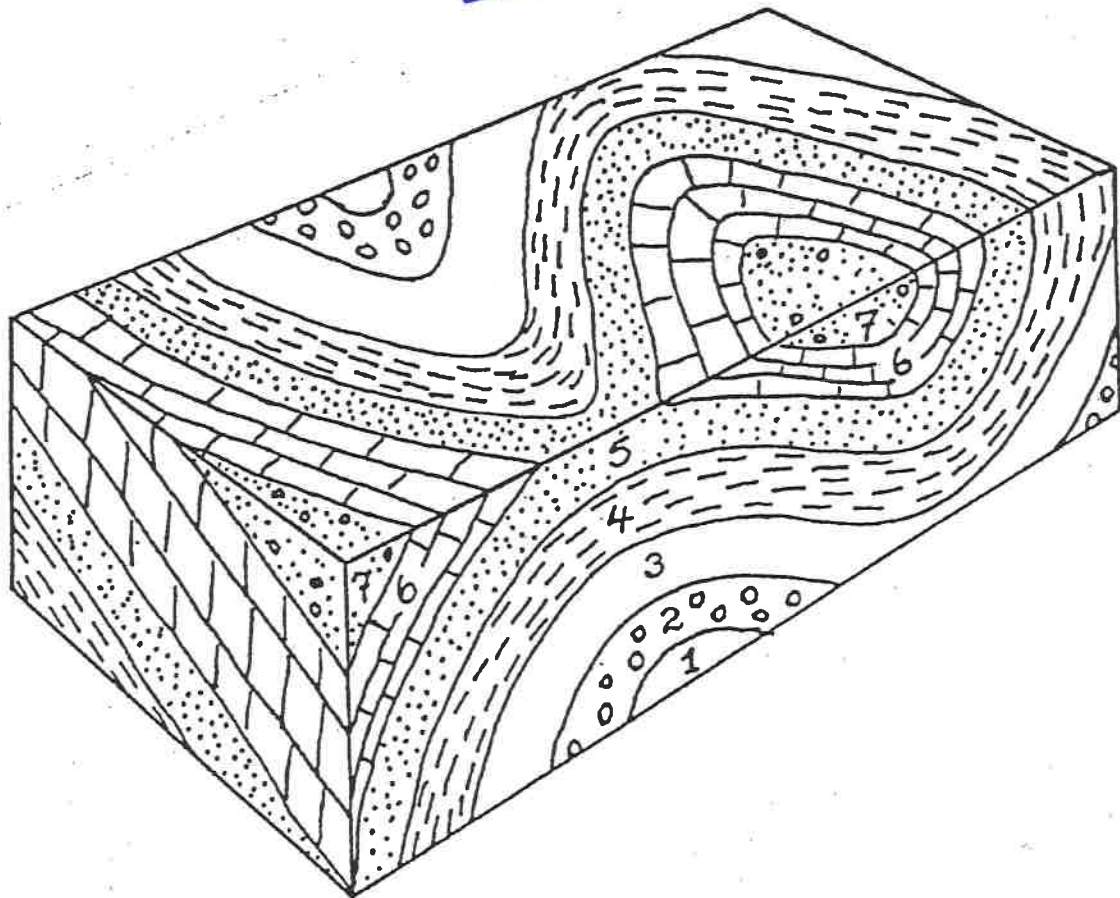
- a. \_\_\_\_\_
- b. \_\_\_\_\_
- c. \_\_\_\_\_
- d. \_\_\_\_\_
- e. \_\_\_\_\_
- f. \_\_\_\_\_

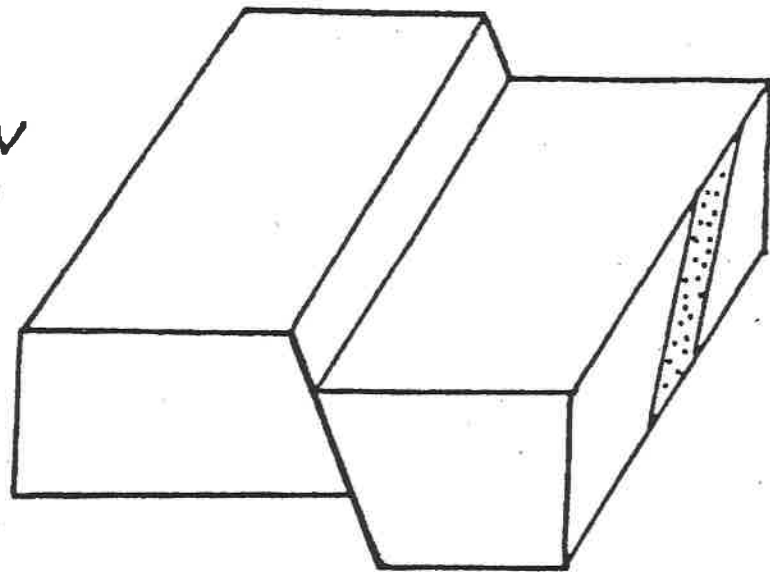
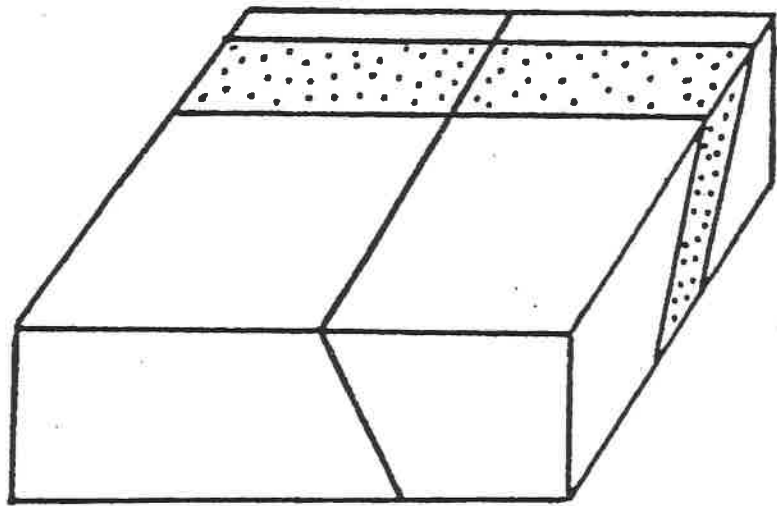


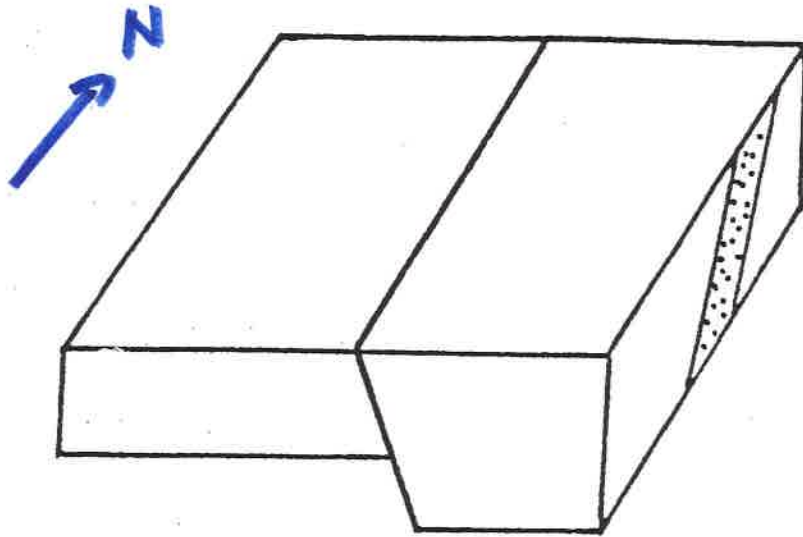


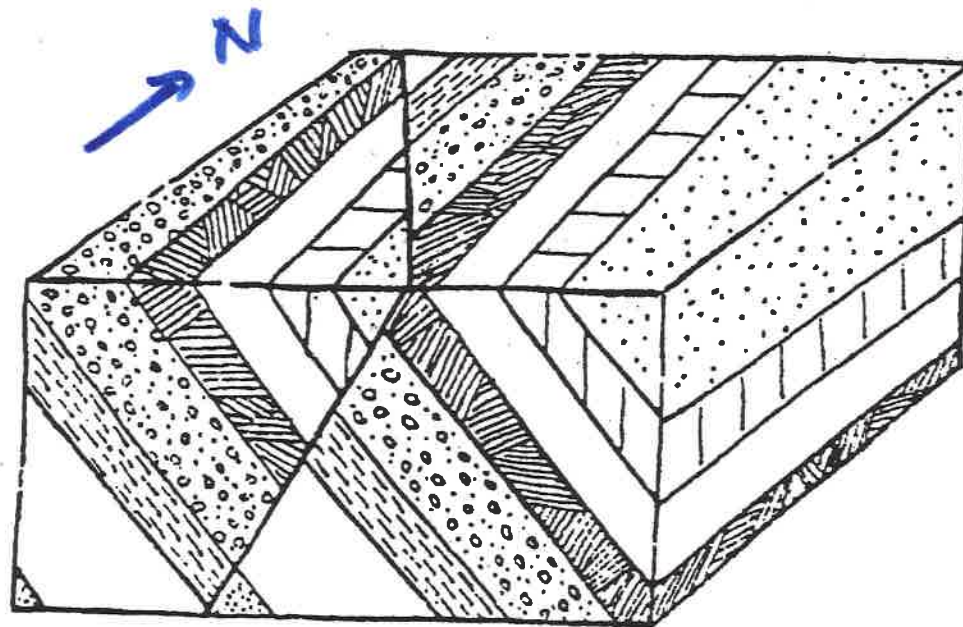


→ N





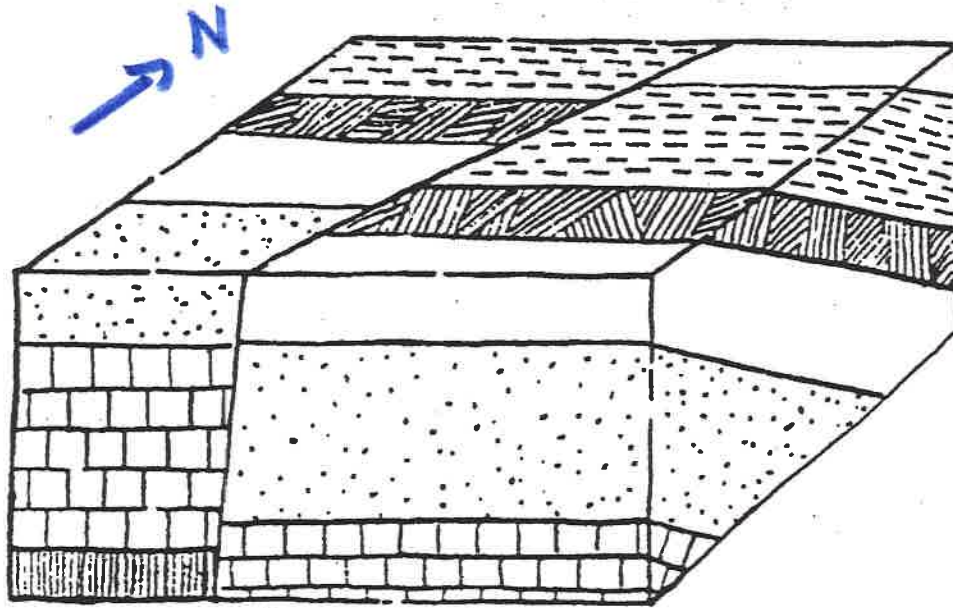




---

**Type of fault**





---

Type of fault

